

R-F-M

THE MIDLANDS MART

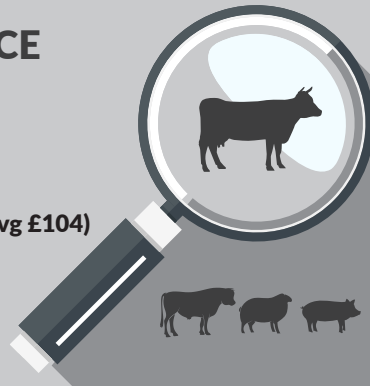
— RUGBYFARMERSMART.COM —

The Charolais Pavilion, Avenue M, Stoneleigh Park,
Kenilworth, Warwickshire CV8 2RG
02476 697731 | www.rugbyfarmersmart.com | 43/139/8013
Office hours: Monday to Friday - 9.00am - 5.00pm
Opening Time: Gates open at 5.30am until further notice

MARKET REPORTS FOR MONDAY 30TH JANUARY 2023

MARKET AT A GLANCE

Steers to 317p/kg & £2264
Prime Heifers to 341p/kg & £2234
Prime Bulls to 300p/kg & £2502
Cows to 269p/kg & £2050
Prime Hogg SQQ 237p/kg (1491 Avg £104)
Prime Hogs to 278p/kg & £145
Ewes to £190 (712 Avg £95.50)



THURSDAY 9TH FEBRUARY SALE OF IN-LAMB EWES, STORE CATTLE & WEANLINGS

Catalogues & Entry Forms available by post, email or on the website
www.rugbyfarmersmart.com | admin@rugbyfarmersmart.com

CATTLE: 115 FORWARD

Rugby Farmers Mart
Monday 30th January 2023

Numbers again hard to find, but what was forward what a run of quality cattle forward.

Amorise Farms, Wooten Warren topped the pounds per head in the steers at £2363.98

Not far behind from Chris Mayfield, Melton Mowbray with bullocks to £2225. A fantastic consignment from the Mayfield's averaging over £2100.

Top pence per kilo again coming from the Mayfield Family at Melton selling to 317ppk.

In to the heifers James May, Tardebigge not failing to disappoint 2 weeks on the trot with heifers to 341ppk. A little mention to his Angus steer at 283ppk.

Robert Nichols, Barby finishing his season on a high with heifers to £2234, £2214 and £2086.

Normal commercial cattle regularly selling to 290ppk with R grade cattle 280ppk. Young Bulls it was Young Josh Geary making the headlines today with a fabulous Blue Bull at 300ppk or £2502.

A better effort of cows forward reaping the rewards of the live ring with 19 forward selling to 269ppk from J&H Tustian, Epwell or £2049.

Square cows selling to 215ppk with dairy bred cows selling from 180/210ppk depending on finish and quantity of the old mid rift.

Auctioneer: Emma Coupland (07808 271218)

****FAT CATTLE NEW TIMINGS****
COWS 8:30AM
PRIME CATTLE 9AM

STEERS & BULLS

Top prices per Head				FA
British Blue (Bull)	834kg	£2502	J Geary	Y
British Bull	778kg	£2264	Amorise Farms Ltd	Y
Limousin x	702kg	£2225	K S Mayfield & Co	Y
Blonde	738kg	£2184	N & T Faulconbridge	Y
Limousin	724kg	£2179	K S Mayfield	Y

Top prices per Kilo				
Limousin x	702kg	317ppk	K S Mayfield & Co	Y
Limousin	678kg	311ppk	K S Mayfield & Co	Y
British Blue	674kg	310ppk	R J Tustian	Y
British Blue	692kg	309ppk	K S Mayfield & Co	Y
Limousin	696kg	306ppk	K S Mayfield & Co	Y

HEIFERS

Top prices per head				FA
Charolais x	696kg	£2234	R F & J A Nichols	Y
Charolais x	726kg	£2214	R F & J A Nichols	Y
Limousin x	672kg	£2177	S & A May	Y
Limousin	624kg	£2103	S & A May	Y
Charolais x	646kg	£2087	R F & J A Nichols	Y
Top prices per kilo				
Limousin x	562kg	341ppk	S & A May	Y
Limousin	624kg	337ppk	S & A May	Y
British Blue	586kg	328ppk	S & A May	Y
Limousin	524kg	327ppk	S & A May	Y
Limousin x	672kg	324ppk	S & A May	Y

Len Eadon 1999-2022 Tribute page

<https://leneadon.muchloved.com/?fbclid=IwAR1QM9qsvxqscmyehDUUwVjrbR4KICliDqyewzWbdYBEAsDaB164bZn50g4>

COWS

Top prices per head Cows					FA
Limousin	762kg	£2050	J & H Tustian	Y	
Aberdeen Angus	820kg	£1755	J Windridge & Son	Y	
Charolais	784kg	£1686	R Ellis & Son	Y	
Charolais	836kg	£1672	R Ellis & Son	Y	
Top prices per kilo					
Limousin	762kg	269ppk	J & H Tustain	Y	
Beef Shorthorn	630kg	220ppk	S & A May	Y	
Charolais	784kg	215ppk	R Ellis & Son	Y	
Aberdeen Angus	820kg	214ppk	J Windridge & Son	Y	



SHEEP: 2508 FORWARD PRIME HOGGS: 1491 FORWARD SQQ 237P/KG AVG £104

A bitter pill to swallow as the trade retracts again as Supply Nationally overtakes demand. In truth an sqq of 237p/kg for below avg yarding of meat was a pleasing result in the current climates and as ever thankfully above returns available at local deadweight options. Not the top end of quality we can see but meat well rewarded. Top 278p/kg for 36kg from G R Fountaine & Son for Beltex and J P Page 41kg.5kg and 38kg 267 and 261p/kg. Messrs Coombes 256p/kg to 258p/kg. Heavies trade back significantly but topping at 271p/kg at 48kg for Robert and Jenny Nichols with 46kg for R Goodman up from Newbury and D Coombes both 250p/kg and W King up from Thame to 47.5kg at 246p/kg. Best end lambs regularly 250p/kg plus with run of the Mill Export 230p/kg - 240p/kg. An all in avg of £105 a good testament to trade with less weight about then is usual for this time of year. Exports to £111 at 41kg from JP Page & Sons with 44kg the same for Messrs Nichols. Heavies to £145 for Suffolks from W E Russell and £140 for J & R Lowe. Trade now hits a barrier at the Export ports and we hope that a new month brings more demand.

From the 1st January all Sunday night lairage fat sheep will be subject to compulsory clipping either by the vendor or by the Sunday night clipping team.

CLEANLINESS OF SHEEP;
WE HAVE NOW HAD INCIDENTS OF SHEEP BEING BINNED AND REJECTED ON THE KILL LINE DUE TO DIRTY BELLIES. IT IS FSA AND TRADING STANDARDS LAW THAT ANIMALS MAY NOT BE SENT FORWARD FOR SLAUGHTER IN A STATE WHEREBY "THE STANDARDISED PROCESS OF DRESSING CANNOT BE COMPLETED WITHOUT TOUCHING DIRT OR DETRITUS, THEN THE ANIMAL SHOULD NOT PASS ANTI-MORTEM INSPECTION". IN SIMPLE TERMS STOCK SHOULD BE CRUTCHED AND BELLIED TO ALLOW THE REMOVAL OF THE LAMBS INTERNAL ORGANS. LAMBS NOT FITTING THIS DESCRIPTION CANNOT BE PRESENTED IN OUR SALES.

Auctioneer: Thomas Wrench

PRIME HOGGS SQQ 237p/kg

Per Kilo under 45kg			
Charollais x	36.00kg	278ppk	G R Fountaine & Son
Texel x	41.50kg	267ppk	J P Page & Sons
Texel x	38.00kg	261ppk	J P Page & Sons
Texel x	36.00kg	258ppk	D G Coombes
Texel x	43.00kg	256ppk	W G King & Sons

Per HEAD			
Texel x	41.50kg	£111.00	J P Page & Sons
Texel x	44.00kg	£111.00	R F & J Nichols
Texel x	43.00kg	£110.00	W G Kings & Sons
Texel x	44.50kg	£110.00	D G Coombes
Texel x	44.00kg	£109.00	R & T Reeve

Per Kilo over 45kg			
Texel x	48.00kg	271ppk	R F & J Nichols
Texel x	46.00kg	250ppk	D G Coombes
Charollais x	46.00kg	250ppk	Milkwood Farm Ltd
Texel x	47.00kg	247ppk	W G Kings & Sons
Texel x	47.50kg	246ppk	RFS Ltd

Per HEAD			
Suffolk x	76.00kg	£145.00	W E Russell
Charollais x	68.00kg	£140.00	J & R Lowe
Suffolk x	64.50kg	£139.00	WSE & CA Moreby
Charollais x	66.00kg	£138.00	H L Goode & Son
Texel x	59.50kg	£136.00	J & R Lowe

Sunday lairage is now open from 9am-3:00pm
Gates close 3:00pm **STRICTLY.**

DROVERS WANTED

To find out more details please call Sophie on 02476 697731 or email
admin@rugbyfarmersmart.com

CULL EWES: 712 FORWARD



Less about and no massive strength but a much improved trade throughout with only the very lean remaining incredibly hard to place and FARMERS SHOULD FEED! Top Ewes today very dear and more best end needed. Selling to £190 for IM Allen & Partners with RFS Texels to £155 and then Messrs Kellett and Leam Farms both to £150. White face meat all over £130. Suffolks to £141 for C Cockerill & Son with £130 for TH Morris & Sons and £129 for John Peebles. Suffolks £110 to £125 regularly. Mules to £116 for Roger Coombes with £114 to the same home and £103 for Leam Farm whilst Welsh Mules £104 for R J Wright. Mules regularly £90 to £100.

Auctioneer: Thomas Wrench

EWES

Beltex x	£190	I M Allen & Partners	Beltex x	£150	R Kellet
Texel x	£155	RFS Ltd	Beltex x	£146.50	R Kellet
Beltex x	£150	Leam Farm Partnership	Suffolk x	£141	C E Cockerill & Son



AUTO GATES LTD

Bridge Farm, Holt Lane, Ashby Magna, LE17 5NJ

Trevor 07498993897/01455 202791

Email: tjautogate@gmail.com

Fitted to new or existing gates, wood or steel automated.

Sliding, swinging or cantilever.

GRAZING WANTED

Ideally 20 and 50 acres in a 10 mile radius of Southam for sheep/cattle/ mowing
Please call 07973954836



STORE SHEEP: 305 FORWARD

In this section we sold an outfit of Goats....a Nanny and 2 kids @£68 per life

The Store Lambs were a little easier following the Prime prices but still better than expected

Selling to £98 for John Terry's Dorset lambs, amongst a fairly decent entry

Auctioneer Tim Webster

HARRIS & CLARKE CHARTERED ACCOUNTANTS

...Specialising In Agriculture...

Our team of staff has many years of experience in dealing with the accountancy and taxation affairs of farmers, landowners and agricultural contractors

For further information or a free no obligation meeting please contact

John Harris

7 Billing Road, Northampton, NN1 5AN
Telephone 01604 622274
www.harrisandclarke.co.uk



PUPS FOR SALE

Cockapoo Puppies
Ready beginning of Feb
Call James for more info
07989300678

FOR SALE

IAE Cattle Crush £350.00 ono
In good condition.
Telephone 07870264654



Farm insurance, the way it should be

We're a family-run business and pride ourselves on forging long term relationships with our farming and agricultural clients. Covering the Midlands, South West and South East, we deliver an extensive range of farm, agri business and equine policies tailored to you.

Farm & Equine **01865 290915**

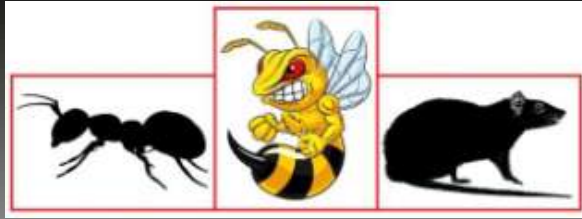
General **01865 844998**

 Follow us **@County_Farm**

www.county-insurance.co.uk/farms


County
Insurance Services

Independent Insurance Brokers County Insurance Services Limited. Address and Registered Office: County House, Glyme Court, Langford Lane, Kidlington, Oxon OX5 1LQ. Authorised and regulated by the Financial Conduct Authority (FCA) (FRN: 597267). Company registered in England No. 08411634



RDB Pest Control

Reliable | Trustworthy | Fast | Effective
Competitive Prices

Ryan Brunt

07922 091 459

www.rdbpestcontrol.co.uk

Why You Should Choose Us

- ✓ Cater for Red Tractor and Farm Assurance Schemes
- ✓ Wide ranging experience on Farms with over 25 existing routine agricultural clients
- ✓ Fully qualified - RSPH Level 2 in Pest Control
- ✓ Trustworthy and security vetted
- ✓ Prompt, reliable fast response

A selection of sites where I have experience:

Farmers Market • Local Airport • Farms • Warehouses •
Industrial Estates • Food Premises • Private Houses • Country
Estates • Building Sites • Local Councils • Schools •
Day Nurseries • Care Homes

WE COVER SMALL FARMS, LARGE FARMS AND EVERYTHING IN BETWEEN



From sheep farmers to arable farmers.
Flower growers to poultry farmers.

NFU Mutual is proud to insure over 75% of UK farms with our Farm Select insurance. But we want more farms to benefit from great cover and local service. NFU Mutual has introduced Farm Essentials insurance - designed to meet the needs of smaller farms.

As your local agency, we are close by and can provide expert advice and hands-on support when you need it.

Call **Coventry Office** on **02476 444519**
NFU Mutual, 6 Eastwood Business Village,
Harry Weston Road, Binley Business Park,
Coventry, CV3 2UB



NFU Mutual
FARM INSURANCE

WANTED

Muck bags wanted so Leah and Clara (the lovely young drover girls) can continue to fund their uni social life! Please drop them at the market if you have any sitting around
Thank you

FOR SALE

Hyline point of lay hens and growing birds for sale.
Brown egg layers suitable for free range or deep litter.
contact Mark Martin on;
07976 260 775

T.A.R HIRE

FOR HIRE:

- 10 & 14 TON REAR MUCK SPREADERS
- 12 TON TRAILERS WITH SILAGE SIDES
- ROAD SWEEPER
- FLAT TRAILERS
- GRASS TOPPERS
- CONTRACT MUCK SPREADING SERVICES

CONTACT:

DAVENTRY (ROB) - 07801791212

HINCKLEY (ALAN) - 07802951179



FINISHING CATTLE? GROWING CATTLE? FEEDING SHEEP?

BERRY STOCK FEEDS

Do you want **HIGH PERFORMANCE, COST EFFECTIVE, FULLY ASSURED and COMPLETE FEEDS?** Then contact **BERRY STOCK FEEDS:**

Tel: 01788 890320 E-Mail: john@berryfieldsfarm.co.uk Web: www.berrystockfeeds.co.uk
BERRYFIELDS FARM, DAVENTRY, NN11 8NP

RFM

THE MIDLANDS MART

RUGBYFARMERSMART.COM

FORTHCOMING SALES

THURSDAY 9TH FEBRUARY SALE OF STORE CATTLE & WEANLINGS

**Vendors who are wishing to sell stock
please feel free to contact:**

Tom Wrench - 07774 723758 Market Manager & Auctioneer

Tim Webster- 07437 101163 Auctioneer & Fieldsman

Emma Coupland- 07808 271218 Fat Cattle Auctioneer

Charlie Betteridge- 07760266701 Fieldsman

Nathan Shaw-07460120293 Yard Manager

who will gladly make

A FREE ON FARM VISIT & VALUATION



Follow us on social media:

Facebook & Twitter - @RFMMidlandsMart

Instagram - rugbyfarmersmartLtd